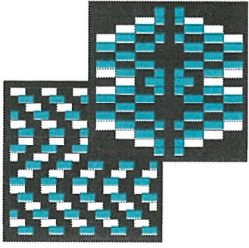


Southwest Women's
Fiber Arts Collective
www.fiberartscollective.org

Hand crafted by:

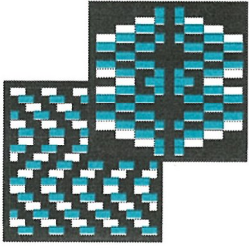
\$ _____



Southwest Women's
Fiber Arts Collective
www.fiberartscollective.org

Hand crafted by:

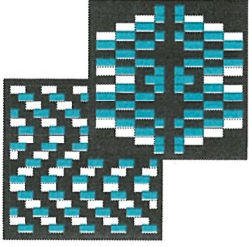
\$ _____



Southwest Women's
Fiber Arts Collective
www.fiberartscollective.org

Hand crafted by:

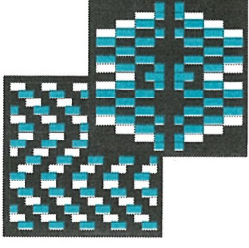
\$ _____



Southwest Women's
Fiber Arts Collective
www.fiberartscollective.org

Hand crafted by:

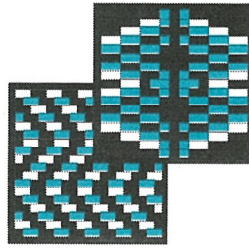
\$ _____



Southwest Women's
Fiber Arts Collective
www.fiberartscollective.org

Hand crafted by:

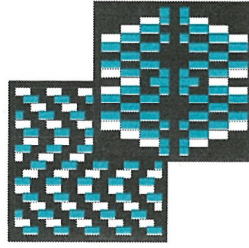
\$ _____



Southwest Women's
Fiber Arts Collective
www.fiberartscollective.org

Hand crafted by:

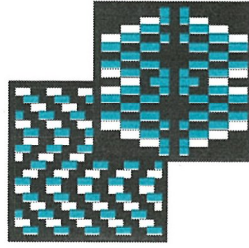
\$ _____



Southwest Women's
Fiber Arts Collective
www.fiberartscollective.org

Hand crafted by:

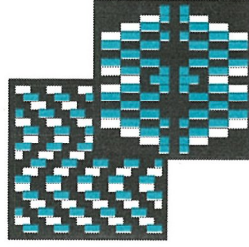
\$ _____



Southwest Women's
Fiber Arts Collective
www.fiberartscollective.org

Hand crafted by:

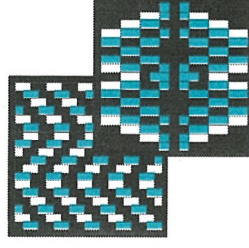
\$ _____



Southwest Women's
Fiber Arts Collective
www.fiberartscollective.org

Hand crafted by:

\$ _____



Southwest Women's
Fiber Arts Collective
www.fiberartscollective.org

Hand crafted by:

\$ _____

Technique:

Original Art

Modified or
Adapted Pattern

Care :

Fiber Content:

Inv. #:

Technique:

Original Art

Modified or
Adapted Pattern

Care :

Fiber Content:

Inv. #:

Technique:

Original Art

Modified or
Adapted Pattern

Care :

Fiber Content:

Inv. #:

Technique:

Original Art

Modified or
Adapted Pattern

Care :

Fiber Content:

Inv. #:

Technique:

Original Art

Modified or
Adapted Pattern

Care :

Fiber Content:

Inv. #:

Technique:

Original Art

Modified or
Adapted Pattern

Care :

Fiber Content:

Inv. #:

Technique:

Original Art

Modified or
Adapted Pattern

Care :

Fiber Content:

Inv. #:

Technique:

Original Art

Modified or
Adapted Pattern

Care :

Fiber Content:

Inv. #:

Technique:

Original Art

Modified or
Adapted Pattern

Care :

Fiber Content:

Inv. #:

Technique:

Original Art

Modified or
Adapted Pattern

Care :

Fiber Content:

Inv. #: